



GEORGE P. BANE, INC. / P. O. BOX 4665 / TYLER, TEXAS 75712 /

TELEPHONE 903/597-6641
WATS NUMBER 800/594-2200
FAX NUMBER 903/593-0519

July 18, 2022

County clerk

Titus County #3
100 West First Street
Mt. Pleasant, Texas 75455

Dear Commissioner Dana Applewhite,

Thank you for the opportunity to quote our John Deere Grader to you. Our quote is as follows:

2016 John Deere 770GP S/N 1DW770GPPFF673497 with all standard equipment plus 14' Blade, Cab with air conditioning and heater, 17 X 25 tires and Ripper / scarifier combo on rear. Machine has 2,832 hours on it.

Cash Sales Price \$ 185,291.75

Once again, Thank you for the opportunity to fulfill your equipment needs. Please give me a call at 903/752-7601 if you have any questions.

Sincerely,

Byron Underwood
George P. Bane, Inc.
Governmental Salesman

2016

John Deere 770GP

S/N 1DW770GPPFF673497

3,000 Hours

Cab

Radio

Air Conditioning & Heater

Front and Rear Window Washers with Intermittent Wipers

8 Speed F-R Auto-shift Transmission

17.5 R 25 Tires

5 Shank Ripper

Front Push Block

14' Moldboard with Hyd Side Shift

Front & Rear Light Package

Warning/Hazard Lights

Subrecipient Name Titus County	Contract ARPA Funding Program
---------------------------------------	--------------------------------------

Solicitation #

Project Description: Purchase of a used Motorgrader w/ 14 ft. moldboard
--

Contract Type <input checked="" type="checkbox"/> Fixed Price <input type="checkbox"/> Time & Material (Must include decision no other contract type applicable) <input type="checkbox"/> Other _____	Procurement Method <input type="checkbox"/> Micro Purchase <input type="checkbox"/> Small Purchase <input type="checkbox"/> Competitive (RFP/RFQ) <input type="checkbox"/> Sealed Bid <input checked="" type="checkbox"/> Non-Competitive
---	---

Project Cost Estimate					
Item	Description	Unit	Rate	Estimated Cost	Profit
1	Used Motorgrader w/all standard equipment; 14' blade, AC & heated Cab	1		\$195,606.00	
Subtotal Estimated Costs (Add all costs)				195,606.00	
Total Estimated Price (Subtotal Estimate Costs + Profit)					

Sources & Basis for Estimate (attach additional documentation)	
Web search performed Jan 19, 2023 for used Motorgrader with 14' moldboard.	
LSR Enterprise, LLC, Weatherford, TX - \$160,000.00	
RDO Equipment, Bismark ND - 204,000.00	
RDO Equipment - Minot, ND 222,820.00	
Average Price - \$195,606.67	

Preparer Signature 	Date 1/19/2023
--	--------------------------

2015 Deere 770GP \$160,000.00

LSR Enterprise

LSR Enterprise, LLC

Weatherford, TX

2015 DEERE 770GP For Sale in Weatherford, Texas | www.lsrenterprise.com (sandhillsinventory.com)

2016 John Deere 772 G \$204,000.00

RDO Equipment

Bismark, ND

2016 John Deere 772G X653673 | RDO Equipment Co.

2016 John Deere 772 GP \$222,820.00

RDO Equipment Co.

Minot, ND

2016 John Deere 772G X346588 | RDO Equipment Co.

2015 DEERE 770GP



USD **\$160,000**

Rental Prices:

Call For Availability

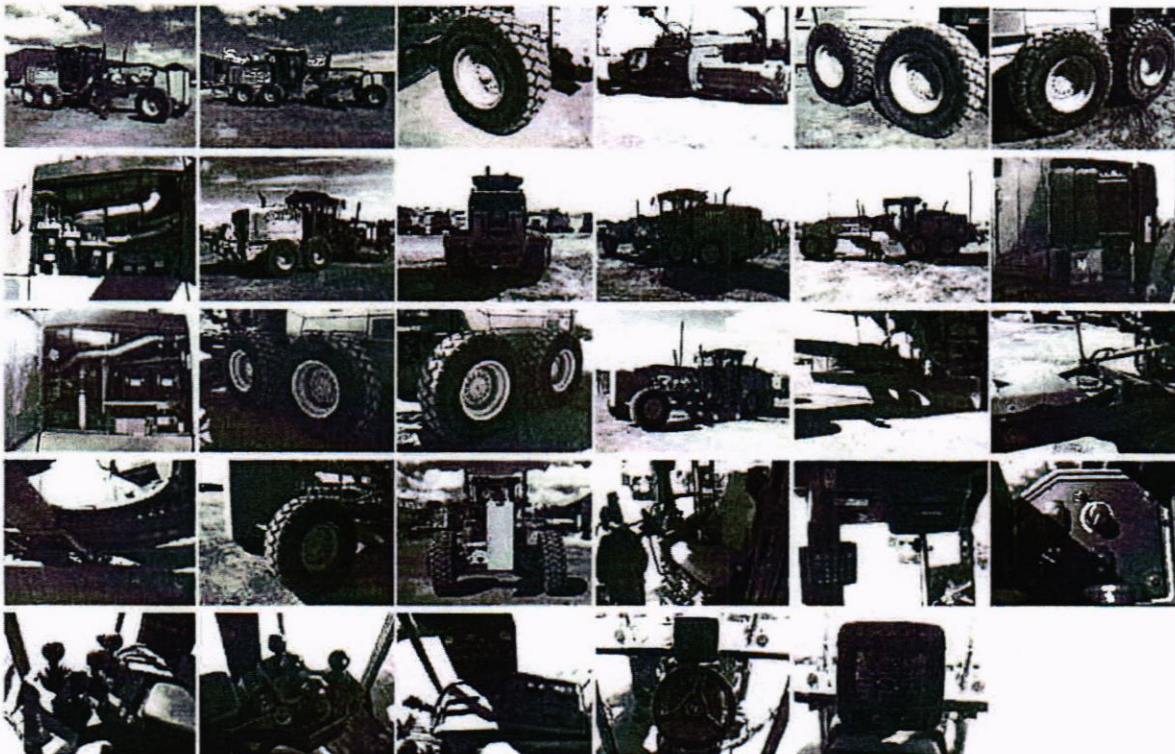
Seller Information

**LSR Enterprise, LLC -
Weatherford**

Contact: Will Singleton

Phone: 817-593-2117

Weatherford, Texas 76088



[Hide Thumbnails](#)

Description

RENTAL & RPO AVAILABLE! Here is a Excellent Condition and Well Maintained 2015 John Deere 770GP Motor Grader. This 2015 John Deere 770GP features EROPS, Heat/AC, AM/FM Radio,

Keyless Start, Finger Tip Controls, Push Block, Rear MS Ripper, Very Good Tires, Strong Running 245 HP John Deere PowerTech PSX 9.0L Engine, and 4,675 Hours. This 2015 has just been through our shop to ensure you could unload from the trailer straight onto the jobsite. Everything starts, works, and operates just like it should. Don't Miss Out! Get To Work Today! Give us a call with any questions or concerns that you may have about purchasing equipment on-line.

Specifications

Year	2015	Manufacturer	DEERE
Model	770GP	Hours	4,880
Condition	Used	Stock Number	JD5561
Hours Meter	Accurate / Verified	Push Block	Yes
Operating Weight	42,760 lb	Ripper	Yes
Ripper Type	Multi Shank	Auxiliary Hydraulics	Yes
Sideshift	Yes	Moldboard Length	14 ft
Tires % Remaining	100	Articulating	Yes
ROPS	Enclosed	Operator Controls	Finger Tip
A/C	Yes	A/C Condition	Excellent
Heater	Yes	Drive	4WD
Horsepower	245 HP	Transmission Type	Direct Drive
Engine Manufacturer JOHN DEERE			

[Show As Paragraph](#)



Irving, TX

Home / Product Details / 2016 John Deere 772GP



John Deere

2016 John Deere 772GP

SKU: X346588

- 6430 Hours
- ND - Minot

[See Full Details](#)

\$222,820

[Apply for Financing](#)

In-Store Pickup Available
at ND - Minot

[View All Available Inventory](#)

Request a Quote

Used Equipment Clearance Center [Learn more](#)

[Request Trade-In Value](#)

[\(877\) 357-1507](#)

By clicking "Accept All Cookies", you agree to the storing of cookies on your device to enhance site navigation, analyze site usage, and assist in our marketing efforts. Please review our [updated privacy policy](#).

Cookies Settings

Accept All Cookies



Liorn Seat
Fwd
14X24
Radials
3 Piece Rims
14 Bld
2Lext

Features

- 6430 Hours
- ND - Minot

Promotions and Offers

Used Equipment Clearance Center

Everyone loves a great deal. See our clearance inventory priced to sell. Find what you seeking and connect with us today.

We'd love your feedback

[How can we improve our product detail?](#)

Specifications

Year	2016
Make	John Deere
Model	772G
Stock Number	X346588
Location	ND - Minot
Serial Number	1DW772GPCGF676930
Engine Hours	6430
Basic Warranty	Expiration Date:10/1/2017 12:00:00 AM, Expiration Hours: 0, Code:
Extended Warranty	Expiration Date:9/29/2021 12:00:00 AM, Expiration Hours: 7500, Code: X

By clicking "Accept All Cookies", you agree to the storing of cookies on your device to enhance site navigation, analyze site usage, and assist in our marketing efforts. Please review our [updated privacy policy](#).

Compare

Bandit

SKU: X222286

2014 Bandit 3500T1767 Hours
MN - Dayton[View Details](#)**\$96,500**[Request a Quote](#) Compare

Lankota

**Lankota Supplementary Kit
for John Deere 600 Series
Corn Heads That Utilize
Storage Stands
#LANSS600CSB**[View Details](#)**\$187.50** Compare

John Deere

2633VT 2633VT Vertical TillageGang angle 21° Front/19° Rear
Working Widths from 20'9" to 40'8"
Operating Speeds 7-10 mph[View Details](#)[Request a Quote](#) Compare

John Deere

**John Deere
Field Irrigation****\$25,400**

Staying Connected

Join our e-mail list to receive information on featured equipment, store promotions and sales, special announcements, and more.

[Subscribe Now](#)

Find a location

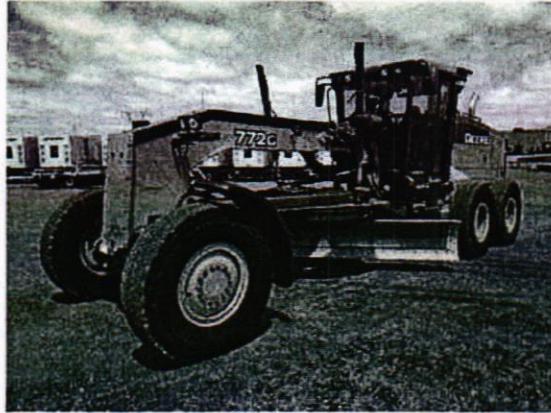
Irving, TX

Connect With Us



Living, TX

[Home](#) / [Product Details](#) / 2016 John Deere 772G



[John Deere](#) >

2016 John Deere 772G

SKU: X653673

- 3844 Hours
- ND - Bismarck

[See Full Details](#)

\$204,000

[Apply for Financing](#)

In-Store Pickup Available
at ND - Bismarck

[View All Available Inventory](#)

Request a Quote

Used Equipment Clearance Center [Learn more](#)

[Request Trade-In Value](#)

[\(877\) 357-1507](#)

By clicking "Accept All Cookies", you agree to the storing of cookies on your device to enhance site navigation, analyze site usage, and assist in our marketing efforts. Please review our [updated privacy policy](#).

[Cookies Settings](#)

[Accept All Cookies](#)



Used Equipment Clearance Center

Everyone loves a great deal. See our clearance inventory priced to sell. Find what you seeking and connect with us today.

We'd love your feedback

[How can we improve our product detail?](#)

Specifications

Year	2016
Make	John Deere
Model	772G
Stock Number	X653673
Location	ND - Bismarck
Serial Number	1DW772GXJFF673099
Engine Hours	3844
Basic Warranty	Expiration Date:12/18/2016 12:00:00 AM, Expiration Hours: 0, Code:
Extended Warranty	Expiration Date:, Expiration Hours: 5000, Code:

Customers Also Viewed



Working Widths from 20'9" to 40'8"
Operating Speeds 7-10 mph

Replac

[View Details](#)

[View Details](#)

[View Details](#)

\$138.50

[Request a Quote](#)

\$25,446.05

\$1,716

Staying Connected

Join our e-mail list to receive information on featured equipment, store promotions and sales, special announcements, and more.

[Subscribe Now](#)

Find a location

Irving, TX

Connect With Us

[Customer Service](#)

[About Us](#)

[Equipment](#)

[Parts](#)

[Service and Support](#)

By clicking "Accept All Cookies", you agree to the storing of cookies on your device to enhance site navigation, analyze site usage, and assist in our marketing efforts. Please review our [updated privacy policy](#).